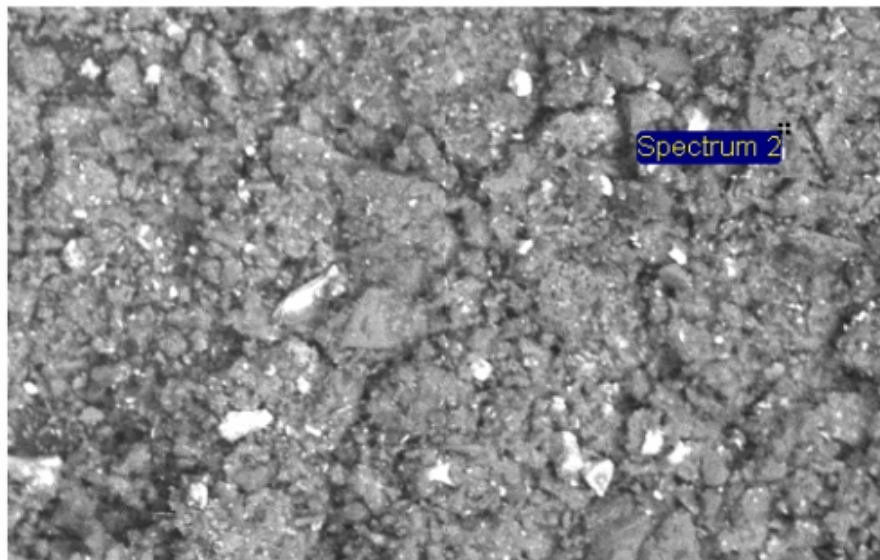




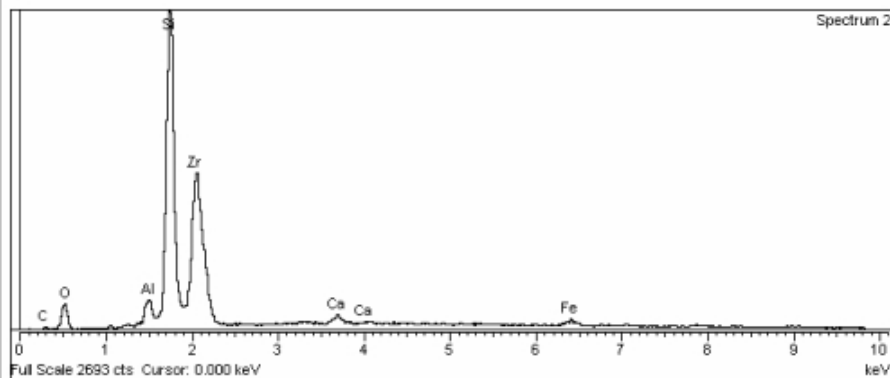
LA-10464

100705 1:56:57 PM



200µm

sample 1 - area 1



Sometimes, the traditional gravimetric ash test doesn't give us enough information about an ash related process defect.

Through a sister company, Argüeso has access to a scanning electron microscope (SEM) fitted with an energy dispersive X-ray (EDS) analysis system. This allows the inferences to be made regarding the chemical nature and origin of ash samples.

The chart to the left shows an SEM image of a deposit and a elemental analysis of a tiny area of the sample.

